



Model: **L6E**
Platform Cell



Features

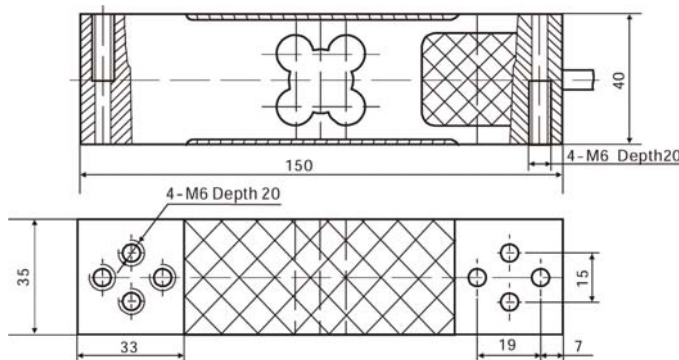
- Capacities: 50kg ~ 300kg
- High accuracy
- Aluminum parallel beam construction
- Max. platform size: 400 × 400
- Integral installation
- With OIML approval: (PTB: D09-03.21)



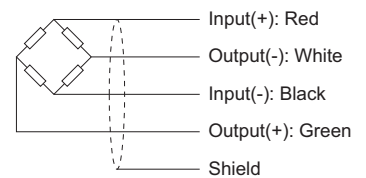
Specifications

| | | | | |
|--|----------|--------------------------------------|------------------------|-------------------------|
| Capacity | kg | 50 / 60 / 80 / 100 / 150 / 200 / 300 | | |
| Output Sensitivity | mv/v | 2.0 ± 0.2 | | |
| Accuracy Class | | C3D | C3 | C3G |
| Max. Number of Verification Intervals | | 2500 | 3000 | 4000 |
| Minimum Loadcell Verification Interval | g | E _{max} /5000 | E _{max} /7000 | E _{max} /11000 |
| Temperature Effect on Zero | %FS/10°C | ≤ ± 0.0280 | ≤ ± 0.0200 | ≤ ± 0.0127 |
| Temperature Effect on Sensitivity | %FS/10°C | ≤ ± 0.0210 | ≤ ± 0.0175 | ≤ ± 0.0131 |
| Combined Error | %FS | ≤ ± 0.0300 | ≤ ± 0.0200 | ≤ ± 0.0150 |
| Creep | %FS | ≤ ± 0.0200 | ≤ ± 0.0167 | ≤ ± 0.0125 |
| Input Resistance | Ω | 406 ± 6 | | |
| Output Resistance | Ω | 350 ± 3 | | |
| Insulation Resistance | MΩ | ≥ 5000 | | |
| Zero Balance | %FS | 2 | | |
| Temperature, Compensated | °C | -10 ~ +40 | | |
| Temperature, Operating | °C | -20 ~ +50 | | |
| Excitation, Recommended | v | 5 ~ 15 | | |
| Safe Overload | %FS | 150 | | |
| Ultimate Overload | %FS | 300 | | |

Dimension



Note: Dimensions in millimeters



Wiring:
Cable length: 2 ± 0.1 m.
Cable diameter: 5 ± 0.2 mm.

گروه مهندسين
عمران و صنايع ايران
(شرکت سهامی خاص)



WWW.OSIMA.IR
تلفن: ۸۸۷۱۱۱۶۱ - ۸۸۷۱۱۱۶۷